



***DSL-200 ADSL USB Modem***  
***User's Guide***

---

---

September 2005

---

DSL200UK..B1

Printed In Taiwan



RECYCLABLE

## **Wichtige Sicherheitshinweise**

1. Bitte lesen Sie sich diese Hinweise sorgfältig durch.
2. Heben Sie diese Anleitung für den spätern Gebrauch auf.
3. Vor jedem Reinigen ist das Gerät vom Stromnetz zu trennen. Verwenden Sie keine Flüssig- oder Aerosolreiniger. Am besten dient ein angefeuchtetes Tuch zur Reinigung.
4. Um eine Beschädigung des Gerätes zu vermeiden sollten Sie nur Zubehöerteile verwenden, die vom Hersteller zugelassen sind.
5. Das Gerät ist vor Feuchtigkeit zu schützen.
6. Bei der Aufstellung des Gerätes ist auf sichern Stand zu achten. Ein Kippen oder Fallen könnte Verletzungen hervorrufen. Verwenden Sie nur sichere Standorte und beachten Sie die Aufstellhinweise des Herstellers.
7. Die Belüftungsöffnungen dienen zur Luftzirkulation die das Gerät vor Überhitzung schützt. Sorgen Sie dafür, daß diese Öffnungen nicht abgedeckt werden.
8. Beachten Sie beim Anschluß an das Stromnetz die Anschlußwerte.
9. Die Netzanschlußsteckdose muß aus Gründen der elektrischen Sicherheit einen Schutzleiterkontakt haben.
10. Verlegen Sie die Netzanschlußleitung so, daß niemand darüber fallen kann. Es sollte auch nichts auf der Leitung abgestellt werden.
11. Alle Hinweise und Warnungen die sich am Geräten befinden sind zu beachten.
12. Wird das Gerät über einen längeren Zeitraum nicht benutzt, sollten Sie es vom Stromnetz trennen. Somit wird im Falle einer Überspannung eine Beschädigung vermieden.
13. Durch die Lüftungsöffnungen dürfen niemals Gegenstände oder Flüssigkeiten in das Gerät gelangen. Dies könnte einen Brand bzw. Elektrischen Schlag auslösen.
14. Öffnen Sie niemals das Gerät. Das Gerät darf aus Gründen der elektrischen Sicherheit nur von autorisiertem Servicepersonal geöffnet werden.
15. Wenn folgende Situationen auftreten ist das Gerät vom Stromnetz zu trennen und von einer qualifizierten Servicestelle zu überprüfen:
  - a – Netzkabel oder Netzstecker sind beschädigt.
  - b – Flüssigkeit ist in das Gerät eingedrungen.
  - c – Das Gerät war Feuchtigkeit ausgesetzt.
  - d – Wenn das Gerät nicht der Bedienungsanleitung entsprechend funktioniert oder Sie mit Hilfe dieser Anleitung keine Verbesserung erzielen.
  - e – Das Gerät ist gefallen und/oder das Gehäuse ist beschädigt.
  - f – Wenn das Gerät deutliche Anzeichen eines Defektes aufweist.
16. Bei Reparaturen dürfen nur Originalersatzteile bzw. den Originalteilen entsprechende Teile verwendet werden. Der Einsatz von ungeeigneten Ersatzteilen kann eine weitere Beschädigung hervorrufen.
17. Wenden Sie sich mit allen Fragen die Service und Reparatur betreffen an Ihren Servicepartner. Somit stellen Sie die Betriebssicherheit des Gerätes sicher.

## Limited Warranty

### - Trademarks

Copyright 2002 D-Link Corporation. Contents subject to change without prior notice. D-Link is a registered trademark of D-Link Corporation/ D-Link Systems Inc. All other trademarks belong to their respective proprietors.

### - Copyright statement

No part of this publication may be reproduced in any form or by any means or used to make an derivative such as translation, transformation, or adaptation without permission from D-Link Corporation/ D-Link Systems Inc as stipulated by the United States Copyright Act of 1976.



## ***D-LINK EUROPE LIMITED PRODUCT WARRANTY***

### **GENERAL TERMS**

---

The Limited Product Warranty set forth below is given by D-LINK (Europe) Ltd. (herein referred to as "D-LINK"). This Limited Product Warranty is only effective upon presentation of the proof of purchase. Upon further request by D-LINK, this warranty card has to be presented, too.

EXCEPT AS EXPRESSLY SET FORTH IN THIS LIMITED WARRANTY, D-LINK MAKES NO OTHER WARRANTIES, EXPRESS OR IMPLIED, INCLUDING ANY IMPLIED WARRANTIES OF MERCHANTABILITY AND FITNESS FOR A PARTICULAR PURPOSE. D-LINK EXPRESSLY DISCLAIMS ALL WARRANTIES NOT STATED IN THIS LIMITED WARRANTY. ANY IMPLIED WARRANTIES THAT MAY BE IMPOSED BY LAW ARE LIMITED IN DURATION TO THE LIMITED WARRANTY PERIOD. SOME STATES OR COUNTRIES DO NOT ALLOW A LIMITATION ON HOW LONG AN IMPLIED WARRANTY LASTS OR THE EXCLUSION OR LIMITATION OF INCIDENTAL OR CONSEQUENTIAL DAMAGES FOR CONSUMER PRODUCTS. IN SUCH STATES OR COUNTRIES, SOME EXCLUSIONS OR LIMITATIONS OF THIS LIMITED WARRANTY MAY NOT APPLY TO YOU. THIS LIMITED WARRANTY GIVES YOU SPECIFIC LEGAL RIGHTS. YOU MAY ALSO HAVE OTHER RIGHTS THAT MAY VARY FROM STATE TO STATE OR FROM COUNTRY TO COUNTRY. YOU ARE ADVISED TO CONSULT APPLICABLE STATE OR COUNTRY LAWS FOR A FULL DETERMINATION OF YOUR RIGHTS.

This limited warranty applies to D-LINK branded hardware products (collectively referred to in this limited warranty as "D-LINK Hardware Products") sold by from D-LINK (Europe) Ltd., its worldwide subsidiaries, affiliates, authorized resellers, or country distributors (collectively referred to in this limited warranty as "D-LINK") with this limited warranty. The Term "D-LINK Hardware Product" is limited to the hardware components and all its internal components including firmware. The term "D-LINK Hardware Product" DOES NOT include any software applications or programs.

---

## **Geographical Scope of the Limited Product Warranty**

---

This Limited Product Warranty is applicable in all European Countries as listed in the addendum "European Countries for D-LINK Limited Product Warranty". The term "European Countries" in this D-LINK Limited Product Warranty only

include the countries as listed in this addendum. The Limited Product Warranty will be honored in any country where D-LINK or its authorized service providers offer warranty service subject to the terms and conditions set forth in this Limited Product Warranty. However, warranty service availability and response times may vary from country to country and may also be subject to registration requirements.

---

## Limitation of Product Warranty

---

D-LINK warrants that the products described below under normal use are free from material defects in materials and workmanship during the Limited Product Warranty Period set forth below ("Limited Product Warranty Period"), if the product is used and serviced in accordance with the user manual and other documentation provided to the purchaser at the time of purchase (or as amended from time to time). D-LINK does not warrant that the products will operate uninterrupted or error-free or that all deficiencies, errors, defects or non-conformities will be corrected.

This warranty shall not apply to problems resulting from: (a) unauthorised alterations or attachments; (b) negligence, abuse or misuse, including failure to operate the product in accordance with specifications or interface requirements; (c) improper handling; (d) failure of goods or services not obtained from D-LINK or not subject to a then-effective D-LINK warranty or maintenance agreement; (e) improper use or storage; or (f) fire, water, acts of God or other catastrophic events. This warranty shall also not apply to any particular product if any D-LINK serial number has been removed or defaced in any way.

D-LINK IS NOT RESPONSIBLE FOR DAMAGE THAT OCCURS AS A RESULT OF YOUR FAILURE TO FOLLOW THE INSTRUCTIONS FOR THE D-LINK HARDWARE PRODUCT.

---

## Limited Product Warranty Period

---

The Limited Product Warranty Period starts on the date of purchase from D-LINK. Your dated sales or delivery receipt, showing the date of purchase of the product, is your proof of the purchase date. You may be required to provide proof of purchase as a condition of receiving warranty service. You are entitled to warranty service according to the terms and conditions of this document if a repair to your D-LINK branded hardware is required within the Limited Product Warranty Period.

This Limited Product Warranty extends only to the original end-user purchaser of this D-LINK Hardware Product and is not transferable to anyone who obtains ownership of the D-LINK Hardware Product from the original end-user purchaser.

| Product Type   |                         |
|--|-------------------------|
|  | Product Warranty Period |
| Managed Switches (i.e. switches with built in SNMP agent)(including modules and management software) | Five (5) years          |
| All other products   | Two (2) years           |
| Spare parts (i.e. External Power Adapters, Fans)   | One (1) year            |

The warranty periods listed above are effective in respect of all D-LINK products sold in European Countries by D-LINK or one of its authorized resellers or distributors from 1<sup>st</sup> of January 2004. All products sold in European Countries by D-LINK or one of its authorized resellers or distributors before 1<sup>st</sup> January 2004 carry 5 years warranty, except power supplies, fans and accessories that are provided with 2 year warranty.

The warranty period stated in this card supersedes and replaces the warranty period as stated in the user’s manual or in the purchase contract for the relevant products. For the avoidance of doubt, if you have purchased the relevant D-LINK product as a consumer your statutory rights remain unaffected.

---

## Performance of the Limited Product Warranty

---

If a product defect occurs, D-LINK's sole obligation shall be to repair or replace any defective product free of charge to the original purchaser provided it is returned to an Authorized D-LINK Service Center during the warranty period. Such repair or replacement will be rendered by D-LINK at an Authorized D-LINK Service Center. All component parts or hardware products removed under this limited warranty become the property of D-LINK. The replacement part or product takes on the **remaining** limited warranty status of the removed part or product. The replacement product need not be new or of an identical make, model or part; D-LINK may in its discretion replace the defective product (or any part thereof) with any reconditioned equivalent (or superior) product in all material respects to the defective product. Proof of purchase may be required by D-LINK.

### **Warrantor**

D-Link (Europe) Ltd.  
4<sup>th</sup> Floor, Merit House  
Edgware Road  
Colindale  
London NW9 5 AB  
United Kingdom

Telephone: +44-020-8731-5555

Facsimile: +44-020-8731-5511

[www.dlink.co.uk](http://www.dlink.co.uk)

|  |           |
|--|-----------|
| OVERVIEW OF THE USER'S GUIDE .....       | 7         |
| OPERATING SYSTEMS .....                  | 8         |
| <i>USB Port</i> .....                    | 8         |
| MICROFILTERS AND SPLITTERS .....         | 8         |
| <i>Microfilters</i> .....                | 8         |
| <i>Line Splitter</i> .....               | 9         |
| <i>ADSL Service</i> .....                | 9         |
| <i>ADSL Service</i> .....                | 9         |
| <b>2 INTRODUCTION .....</b>              | <b>10</b> |
| WHAT IS ADSL? .....                      | 10        |
| MODEM DESCRIPTION AND OPERATION .....    | 10        |
| PRODUCT FEATURES .....                   | 11        |
| <i>Rear Panel</i> .....                  | 11        |
| <i>Front Panel</i> .....                 | 11        |
| <i>LED Indicators</i> .....              | 11        |
| <b>3 MODEM INSTALLATION.....</b>         | <b>12</b> |
| <i>Connect the ADSL</i> .....            | 12        |
| <b>4 SOFTWARE INSTALLATION.....</b>      | <b>13</b> |
| INSTALLING THE DRIVER.....               | 13        |
| <i>Verify the ADSL Connection</i> .....  | 18        |
| Desktop Monitoring.....                  | 18        |
| LED Indicators .....                     | 18        |
| <b>5 MONITORING THE MODEM.....</b>       | <b>19</b> |
| UNINSTALLING THE MODEM.....              | 21        |
| <i>Using the Uninstall Program</i> ..... | 21        |
| <b>6 TECHNICAL SPECIFICATIONS .....</b>  | <b>23</b> |



# About This User's Guide

---

This user's guide tells you how to install your DSL-200 ADSL USB Modem and use it to connect to the Internet.

ADSL services are provided by, and sold by a variety of businesses. Your ADSL service provider may be your telephone company, an Internet service provider (ISP), a business that specializes in providing network services, or a combination of any of these. This guide uses the generic terms *DSL service provider*, *network service provider* or *ISP* to refer to any business or agent that provides DSL service.

---

## Overview of the User's Guide

---

- ◆ Chapter 1 – *Introduction* provides a brief description of ADSL technology and a general description of the Modem and its features
- ◆ Chapter 2 – *Modem Installation* provides instructions for the physical installation of the Modem and cable connections.
- ◆ Chapter 3 – *Software Installation* is a step-by-step description of the installation of the software driver needed for Modem operation.
- ◆ Chapter 4 – *Monitoring the Modem* describes the various status monitoring functions available with the Modem.
- ◆ Chapter 5 – *Uninstalling the Modem* describes the process involved in removing the DSL-200 from your computer.
- ◆ Appendix A – *Technical Specifications* is a list of specifications for the Modem.



# Before You Start

In addition to the Modem hardware and software drivers, you will to gather information before you begin to install the device. Your DSL service provider will give you information required for a successful ADSL connection. In order to avoid problems please read this section and make sure you understand all the prerequisites for proper installation of your new Modem.

---

## Operating Systems

---

The D-Link DSL-200 can be used with PCs running Microsoft® Windows 98, Windows 98 Second Edition, Windows 2000, Windows Millennium Edition or Windows XP.

### ü **USB Port**

In addition to the Windows OS, you will need a USB (Universal Serial Bus) type B port on your computer. These are commonly installed on newer computers, however older PCs may require an additional installation.

---

## Microfilters and Splitters

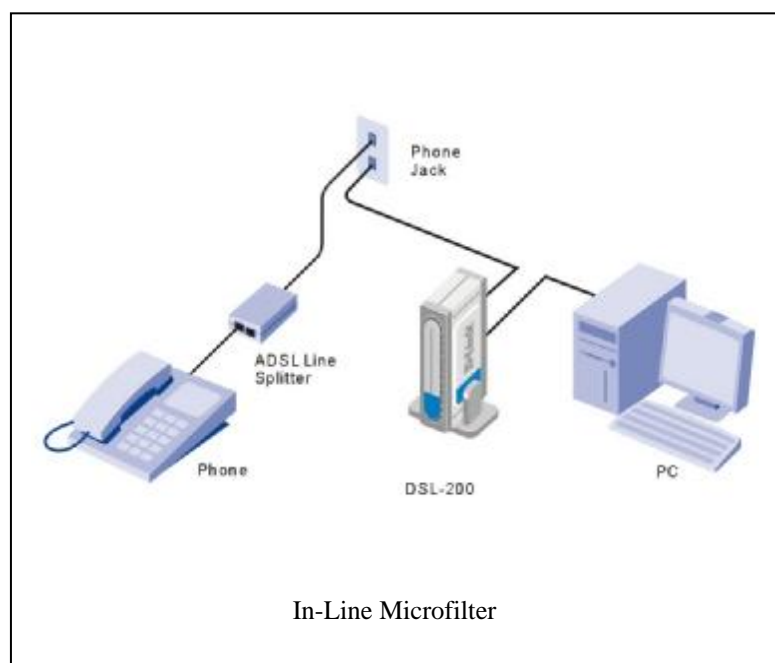
---

Most ADSL clients will be required to install a simple device that prevents the ADSL line from interfering with regular telephone services. These devices are commonly referred to as microfilters or sometimes called (inaccurately) line splitters. They are easy to install and use standard telephone connectors and cable.

Some DSL service providers will send a telecommunications technician to modify the telephone line, usually at the point where the phone line enters the building. If a technician has divided or split your telephone line into two separate lines - one for regular telephone service and the other for ADSL - then you do not need to use any type of filter device. Follow the instructions given to you by your DSL service provider about where and how you should connect the Modem to the ADSL line.

### **Microfilters**

Unless you are instructed to use a “line splitter” (see below), it will be necessary to install a microfilter (low pass filter) device for each telephone or telephone device (answering machines, Faxes etc.) that share the line with the ADSL service. Microfilters are easy-to-install, in-line devices, which attach to the telephone cable between the telephone and wall jack. Microfilters that install behind the wall plate are also available. A typical in-line microfilter installation is shown in the diagram to the right.



**Note:** Do not install the microfilter between the Modem and the telephone jack. Microfilters are only intended for use with regular telephones, Fax machines and other regular telephone devices.

## Line Splitter

If you are instructed to use a “line splitter”, you must install the device between the Modem and the phone jack. Use standard telephone cable with standard RJ-11 connectors. The splitter has three RJ-11 ports used to connect to the wall jack, the Modem and if desired, a telephone or telephone device. The connection ports are typically labeled as follows:

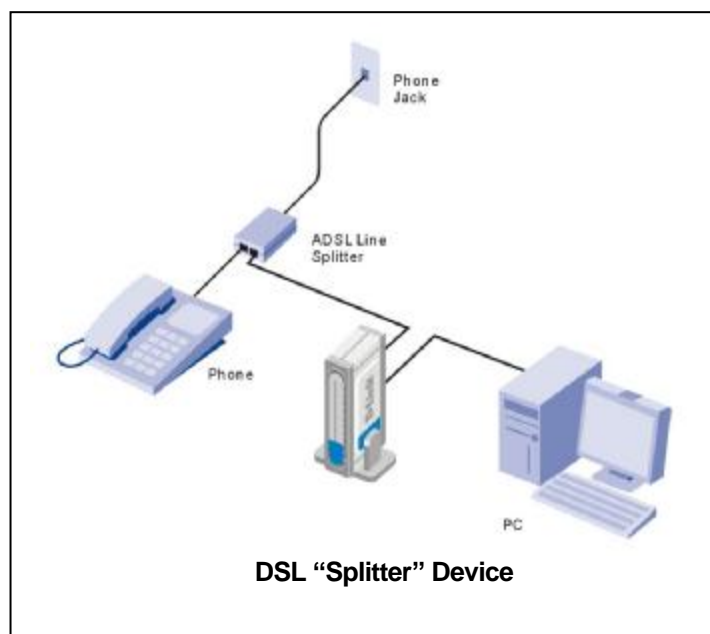
Line - This port connects to the wall jack.

ADSL – This port connects to the Modem.

Phone – This port connects to a telephone or other telephone device.

## ADSL Service

This diagram illustrates how a line splitter should be installed.



In order to use the Modem you must first have ADSL service established with a DSL service provider.

There are four standards used for ADSL connections known as ANSI T1.413 issue 2, G.Lite, G.dmt and G.hs. The standards differ somewhat as to data transfer speed or bit rate. For user convenience, the Modem supports the G.hs Auto-handshake ADSL standard. This allows the Modem to operate with either type of connection.

# INTRODUCTION

---

ADSL modem technology is a relatively new technology and may be unfamiliar to the reader. In this section, we introduce you to ADSL technology and give a brief description of its key attributes. We also give a general description of the D-Link DSL-200 USB Modem and its main features.

---

## What is ADSL?

---

Asymmetric Digital Subscriber Line (ADSL) is an access technology that utilizes ordinary copper telephone lines to enable broadband high-speed digital data transmission and interactive multimedia applications for business and residential customers. Using existing phone lines avoids the need for adding expensive new cable.

ADSL modems use digital coding techniques that greatly increase the bandwidth capacity of telephone lines without interfering with regular telephone services. For the ADSL modem user, this means much faster data communications. ADSL modems make it possible to enjoy benefits such as high-speed Internet access, telecommuting, collaborative computing, distance learning, movies on demand and multi-player video gaming without experiencing any loss of quality or disruption of voice/fax telephone capabilities.

ADSL provides a dedicated service over a single telephone line operating at speeds of up to 8 Mbps downstream (to the user) and up to 640 Kbps upstream, depending on the type of service and local telephone line conditions. These conditions are ideal for many user applications. A secure point-to-point connection is established between the user and the central office of the local telephone company. The user is always connected, thus eliminating dial-up time and simplifying connectivity issues.

D-Link ADSL devices incorporate the recommendations of the ADSL Forum ([www.adsl.com](http://www.adsl.com)) regarding framing, data format, and upper layer protocols.

---

## Modem Description and Operation

---

The DSL-200 ADSL USB Modem is easy to install and use. Please note that you must first install the software driver for the device by following the instructions in Chapter 3. Once the driver has been installed you can connect the Modem to your computer. The Modem connects directly to any functional USB port on a PC with standard USB cable.

---

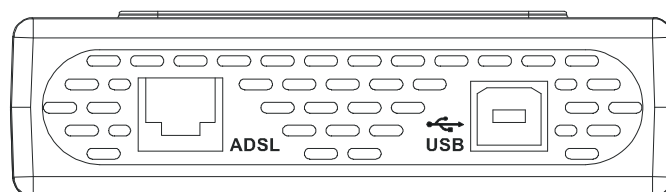
# Product Features

---

The D-Link DSL-200 Modem provides the following features:

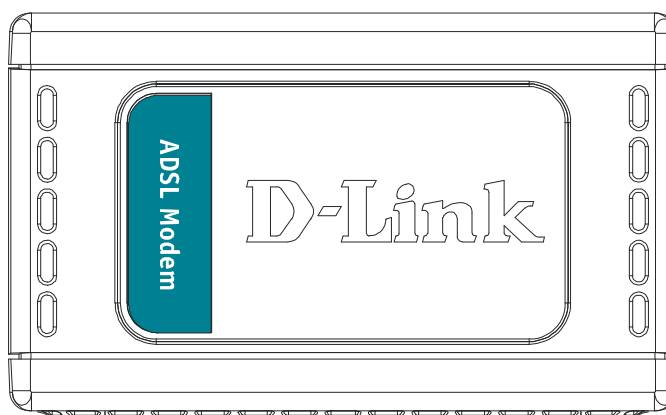
- Ø G.hs compliant (Auto-handshake)
- Ø G.dmt full rate compliant
- Ø G.lite compliant
- Ø RFC 2684 (*Bridged Ethernet*) compliant
- Ø Compatible with all T1.413 issue 2 (full rate DMT over analog POTS), and CO DSLAM equipment
- Ø Compliant with USB Specification Revision 1.1
- Ø USB interface to PC host
- Ø Plug and Play installation
- Ø Easy to upgrade software
- Ø GUI based configuration and diagnostic tool
- Ø Supports up to sixteen simultaneous ATM virtual connections

## Rear Panel



Connect both the ADSL cable and the USB cable at the rear of the Modem.

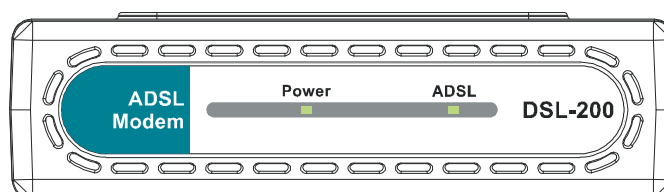
## Front Panel



## LED Indicators

There are two LED indicators on the Modem:

- ◆ **Power** - Indicates the Modem is powered on when lit.
- ◆ **ADSL Link** – Indicates a valid ADSL link has been established when lit.



## MODEM INSTALLATION

---

Before you connect the USB cable, you must install the driver. See the next chapter for driver installation instructions. The only cable you should connect initially is the ADSL cable.

Place the Modem in a location so that you are able to view the LEDs. It should be placed in an area that is clean, dry and ventilated. Make certain it is not placed near a heat source.

### ***Connect the ADSL***

You can begin installing the Modem by performing the following steps:

1. Insert the Installation CD into the CD-ROM drive.
2. Insert one end of the ADSL cable (26 AWG twisted-pair telephone cable) into the telephone wall jack (RJ-11 port).
3. Insert the other end of the ADSL cable into the ADSL port (RJ-11 port) on the Modem.
4. Follow the software installation instructions in Chapter 3.

#### **DO NOT CONNECT THE USB CABLE!**

You must install the software driver before you connect the device to your computer via the USB cable. You will be prompted to connect the device during the installation. Connecting the USB cable at this point will initiate the *Found New Hardware* process.

# SOFTWARE INSTALLATION

---

The DSL-200 can be used with the following operating systems:

- ◆ Microsoft Windows 98
- ◆ Microsoft Windows 98 Second Edition
- ◆ Microsoft Windows 2000
- ◆ Microsoft Windows Millennium Edition
- ◆ Microsoft Windows XP

The procedures for each system are slightly different so be sure to follow the instructions provided for your PC's operating system.

The Microsoft Plug and Play feature will automatically detect the modem after it has been installed. A new window will appear for each step of the installation.

Once you have the driver installed and the Modem is connected, you should verify that the ADSL service is working.

If you wish to uninstall the Modem see Section 5 for instructions.

---

## Installing the Driver

---

Installing the driver for the DSL-200 is a simple process that will only require minutes to complete.

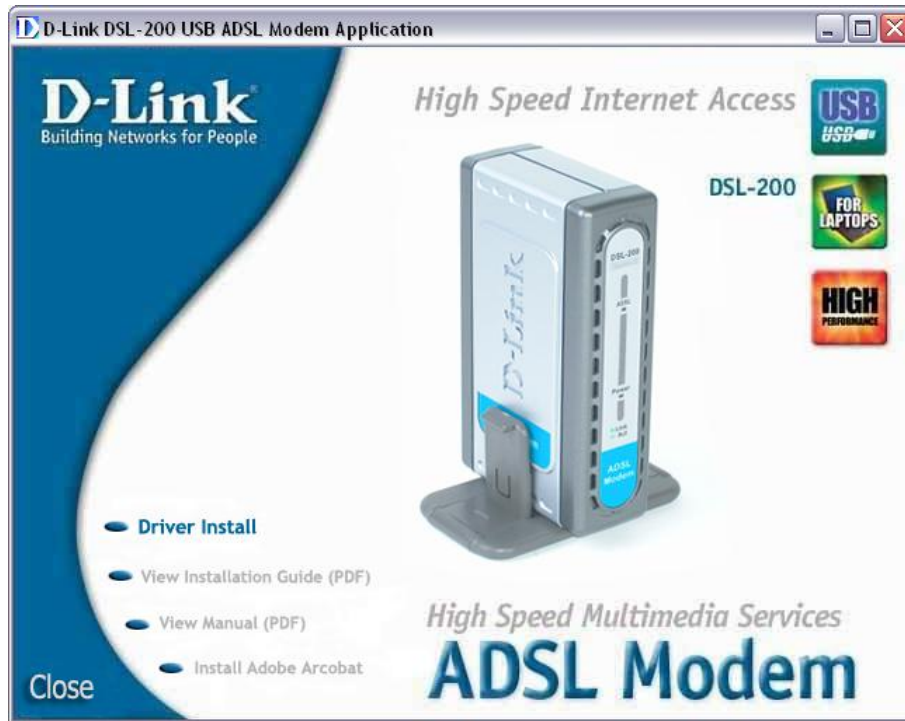
Before starting the software setup process, close all windows and quit any application programs you are running. The installation procedure presented here is the same for Windows 98, 98SE, Me, 2000, XP\* operating systems.



\* For **Windows XP** installations, please read the Read Me file on the Installation CD-ROM.

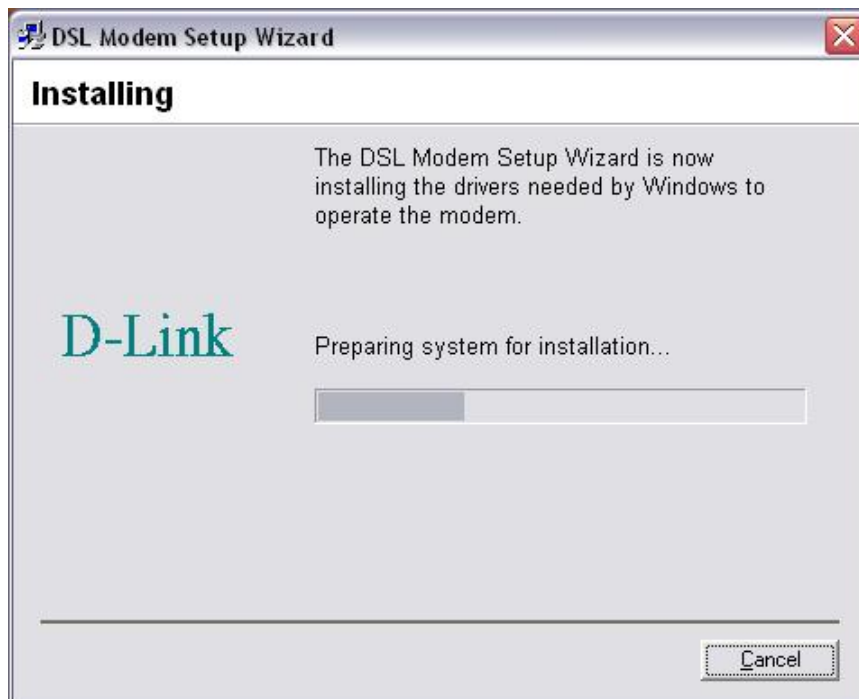
Follow these steps to install the software driver for the Modem:

1. Insert the DSL-200 Installation CD into the CD-ROM drive. The system should detect the installation program and run the program automatically. If installation does not begin automatically after a few seconds, find the start.exe icon located on the CD and double-click it. To view the contents of the CD, open My Computer from the desktop, and right-click on your CD-ROM. Select the "Explore" option and this will reveal the folders and files on the CD. Once the CD-Rom has booted, the user will be presented with the following screen.



Click the **Driver Install** hyperlink on the page above. This will begin the installation process.

2. The computer will search for the appropriate installation file on the CD, and once found, will start the installation process. The user will see the following window, indicating the process is ongoing.



3. The process will lead to the following window, indicating that the user should now physically install the device. Power on the device, connect the USB cable, first to the device and then to an available USB port on your computer.

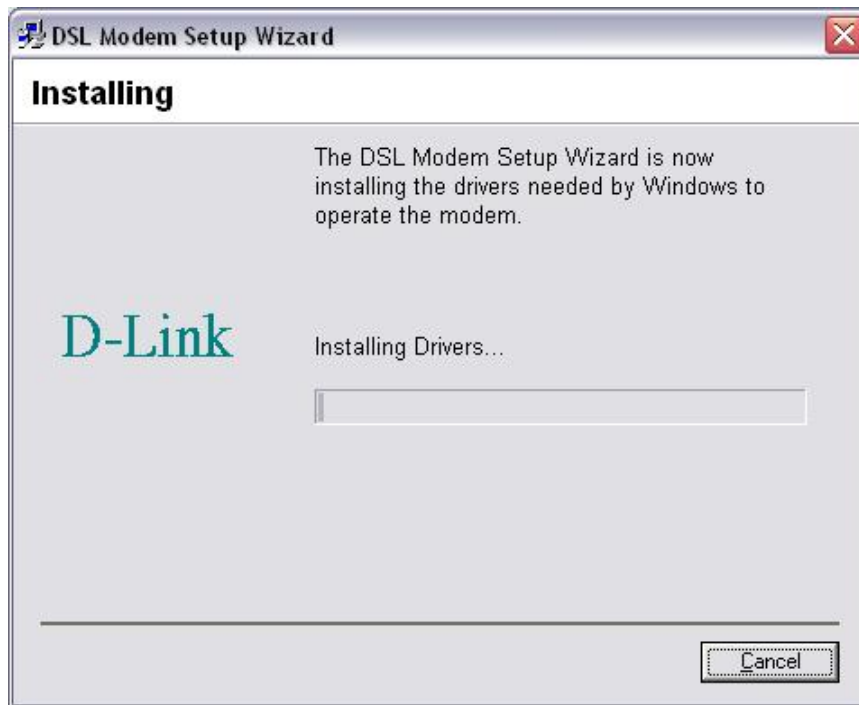


4. The computer will automatically recognize the modem and begin the hardware installation process. The user will be presented with the following two screens. The first one indicates that the computer has recognized the device and is installing files for the hardware installation.

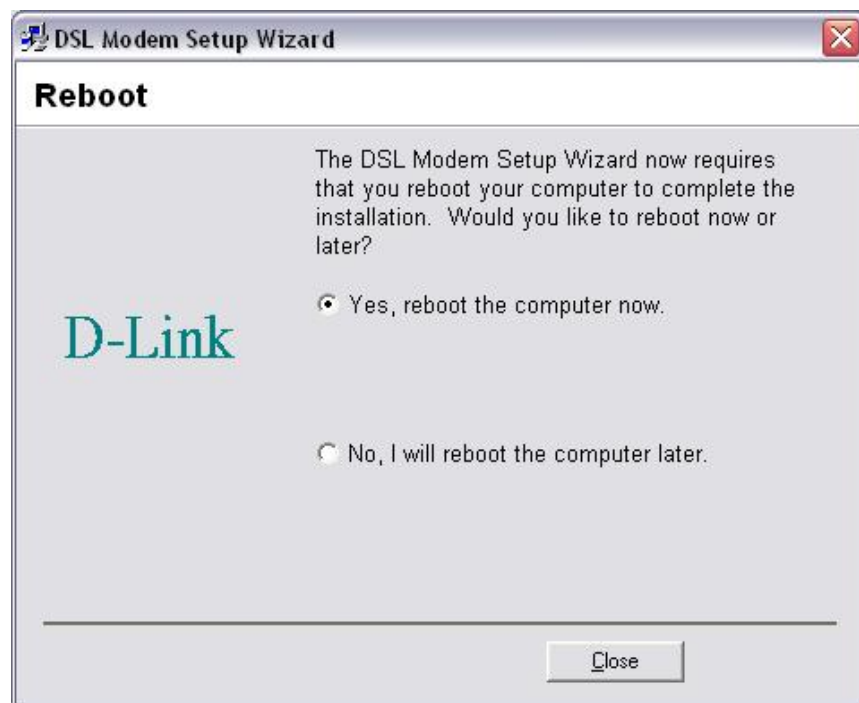




The second window is from the CD installation, indicating to the user that the driver files for the modem are being copied from the CD to the computer.



5. Once the files have been copied and this part of the installation is complete, the user will be presented with this window, prompting the user to reboot the computer. Close all open files, choose **“Yes, reboot the computer now”**, and click **Close**. The window will close and the computer will reboot.



6. Once rebooted, the user will be presented with this window, indicating that the process is complete. Click **Finish** to complete the installation wizard.



7. Now that the driver software has been installed, you are ready to establish a connection to the Internet. Once completed, icons will appear on your PC desktop. Double click the **D-Link Internet Connection** Icon, as seen to the left. The window in the following step should appear to the user.



8. Before completing the following window, connect the ADSL line from your ISP to the ADSL port at the back of the DSL-200. Enter the **User name** and **Password**, given to you by your network service provider, in the window below and click **Dial**. Your modem should connect to the network and your connection will be complete.

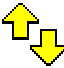

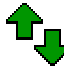





## Verify the ADSL Connection

Before you continue to the final step, make sure that the ADSL connection has been established. This can be done easily using the Modem's ADSL connection monitoring feature described below.

### Desktop Monitoring

A new icon will appear in the System Tray of your desktop. These colored arrows will help you monitor the status of your ADSL connection. The table below summarizes how to interpret the icon indicator.

| System Tray Icon   |   | ADSL Status  |
|--|---|--|
|   |  | <b>Training</b> Both arrows will alternate yellow and brown in color while during the negotiation of the ADSL connection                             |
|   |   | <b>Connection Established</b> Both arrows appear dark green when the connection has been establish (and no data is being passed in either direction) |
|   |   | <b>Transmitting Data</b> The Up arrow appears light green when data is being transmitted   |
|   |   | <b>Receiving Data</b> The Down arrow appears light green when data is being transmitted  |
|  |   | <b>Error</b> Two red arrows indicate an error has occurred. The connection may have been lost.   |

### LED Indicators

The other way to verify that the ADSL connection has been established is to view the ADSL Link indicator on the Modem. This LED will light up when the ADSL connection has been established. The other LED indicator on the front of the device, the Power LED will light up when the USB cable is inserted.

## MONITORING THE MODEM

Once you have installed the Modem you can monitor the status of the ADSL connection by clicking on the connection icon in your System Tray or click on the DSL-200 icon in the Control Panel folder.


Clicking on either icon will bring up the following window:



The bright green light under the screen indicates a valid link. The screen indicates the current state of your modem, the modulation and the Rx and the Tx data rates. On startup, the modem will automatically “train”, or load the settings in your modem. Shortly after the training process, the screen below will appear, now showing your state as (receiving) Data.





Under the screen to the left are two scroll buttons . Clicking on the right scroll button will bring up the screen pictured above, showing the Packing Version, Driver Version, Control Panel Version and the current Firmware Version. Clicking on the left scroll button will return you to the initial screen.

# UNINSTALLING THE MODEM

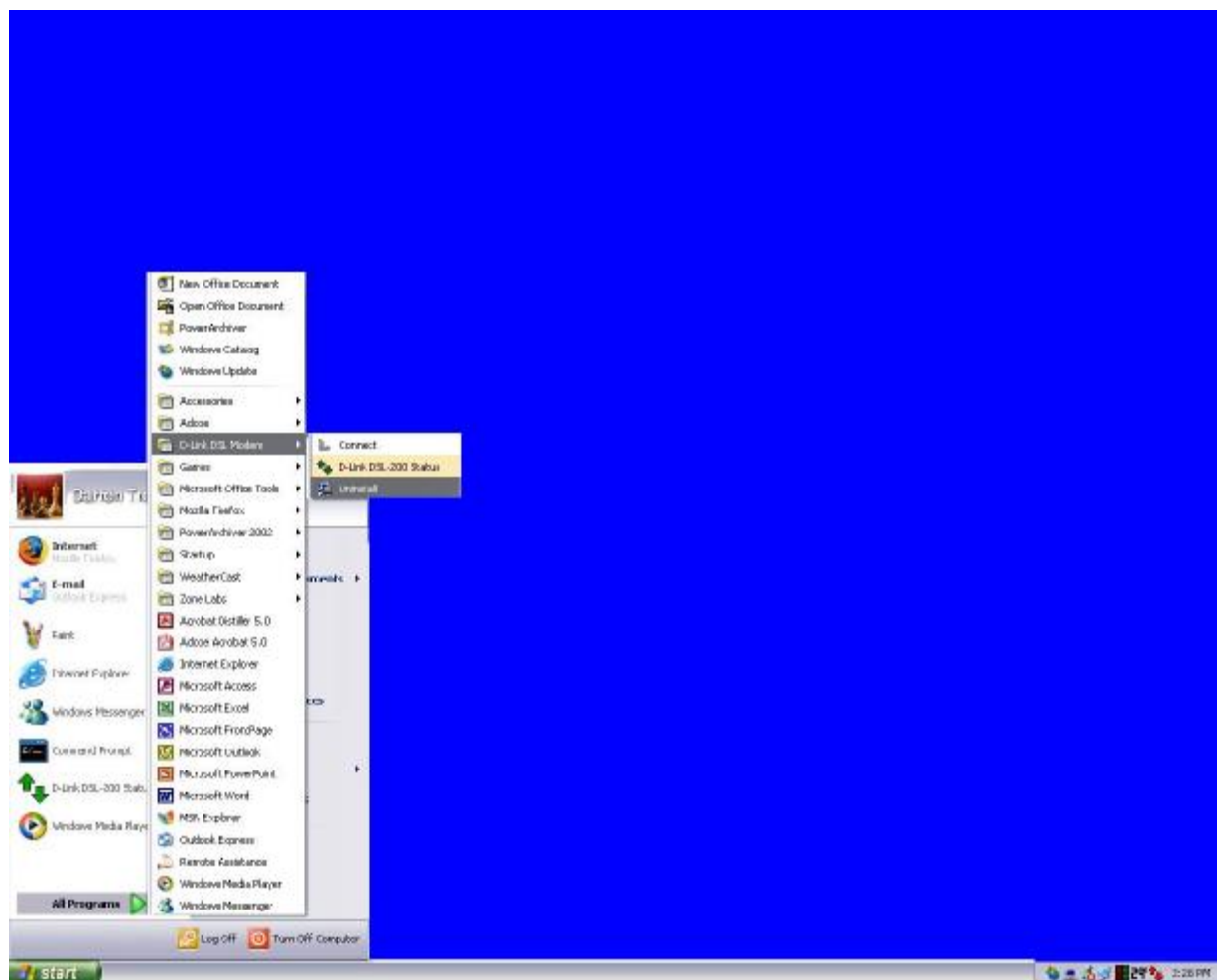
If you need to uninstall the Modem, use the Uninstall program available in the DSL-200 Modem folder. Failure to use the Uninstall program can leave files in the system that can cause problems with future installations, including problems with reinstallation of the Modem.

**IMPORTANT:** Do not remove the Modem using the device manager. You must use the Uninstall Program to remove the device.

## Using the Uninstall Program

Use the Uninstall program accessible from Windows desktops. The procedure is the same for all operating systems.

1. Access the Uninstall program from the **Start** menu. Go to the **D-Link DSL-200 ADSL Modem** folder and select the Uninstall option.



2. You are asked to confirm your intention to remove the device (software). Click **Yes** to uninstall the Modem.



3. The next screen to appear warns the user not to unplug the USB modem from the computer. Please adhere to this warning as failure to do so may cause problems with the uninstallation process of your DSL-200. Click OK to continue.



4. The following screen will be presented to you during the uninstallation process notifying the user that drivers are currently being uninstalled from your computer.



5. Once the drivers have been removed from your system, the following final window will be shown to you, indicating that it is now ok to remove the USB device from your computer. Once removed, click **OK** to finish the uninstallation process.



# TECHNICAL SPECIFICATIONS

| General                          |  |
|----------------------------------|--|
| <b>Standards:</b>                | ANSI T1.413 issue 2<br>ITU G.992.1 (G.dmt)<br>ITU G.992.2 (G.lite)<br>ITU G.994.1 (G.hs)<br>USB 1.1 specifications   |
| <b>Protocol:</b>                 | RFC 2364 PPP over ATM Adaptation Layer 5<br>RFC 2516 PPP over Ethernet<br>RFC 2684 Multiprotocol Encapsulation over ATM Adaptation Layer 5                         |
| <b>Data Transfer Rate:</b>       | G.dmt full rate downstream: up to 8Mbps<br>G.dmt full rate upstream: up to 640Kbps<br>G.lite ADSL downstream: up to 1.5Mbps<br>G.lite ADSL upstream: up to 512Kbps |
| <b>Software Drivers:</b>         | Microsoft Windows 98, Windows 98 Second Edition<br>Windows 2000, Windows Millennium Edition, Windows XP  |
| <b>Media Interface Exchange:</b> | ADSL interface: RJ-11 connector for connection to 26 AWG twisted-pair telephone line<br>Host interface: USB Type B port for upstream connection to USB host        |

| Physical and Environmental   |  |
|------------------------------|--|
| <b>Power Consumption:</b>    | 2.5 watts (max.)                                 |
| <b>Operating Temperature</b> | 0° to 40° C (32° to 104° F)                      |
| <b>Storage Temperature</b>   | -20° to 70° (-20° to 158° F)                     |
| <b>Humidity</b>              | 5% - 95% non-condensing                          |
| <b>Dimensions</b>            | 102mm x 62.5mm x 28mm (4.02in x 2.46in x 1.10in) |
| <b>Weight</b>                | 150gm (0.33lbs)                                  |
| <b>EMC:</b>                  | FCC Class B, CE Class B, C-Tick, BSMI Class B    |
| <b>Safety:</b>               | UL/CUL, TUV                                      |



# International Offices

## U.S.A

17595 Mt. Herrmann Street  
Fountain Valley, CA 92708  
TEL: 1-800-326-1688  
URL: [www.dlink.com](http://www.dlink.com)

## Canada

2180 Winston Park Drive  
Oakville, Ontario, L6H 5W1  
Canada  
TEL: 1-905-8295033  
FAX: 1-905-8295223  
URL: [www.dlink.ca](http://www.dlink.ca)

## Europe (U. K.)

4<sup>th</sup> Floor, Merit House  
Edgware Road, Colindale  
London NW9 5AB  
U.K.  
TEL: 44-20-8731-5555  
FAX: 44-20-8731-5511  
URL: [www.dlink.co.uk](http://www.dlink.co.uk)

## Germany

Schwalbacher Strasse 74  
D-65760 Eschborn  
Germany  
TEL: 49-6196-77990  
FAX: 49-6196-7799300  
URL: [www.dlink.de](http://www.dlink.de)

## France

No.2 all'ee de la Fresnerie  
78330 Fontenay le Fleury  
France  
TEL: 33-1-30238688  
FAX: 33-1-30238689  
URL: [www.dlink.fr](http://www.dlink.fr)

## Netherlands

Weena 290  
3012 NJ, Rotterdam  
Netherlands  
Tel: +31-10-282-1445  
Fax: +31-10-282-1331  
URL: [www.dlink.nl](http://www.dlink.nl)

## Belgium

Rue des Colonies 11  
B-1000 Brussels  
Belgium  
Tel: +32(0)2 517 7111  
Fax: +32(0)2 517 6500  
URL: [www.dlink.be](http://www.dlink.be)

## Italy

Via Nino Bonnet n. 6/b  
20154 – Milano  
Italy  
TEL: 39-02-2900-0676  
FAX: 39-02-2900-1723  
URL: [www.dlink.it](http://www.dlink.it)

## Sweden

P.O. Box 15036, S-167 15 Bromma  
Sweden  
TEL: 46-(0)8564-61900  
FAX: 46-(0)8564-61901  
URL: [www.dlink.se](http://www.dlink.se)

## Denmark

Naverland 2, DK-2600  
Glostrup, Copenhagen  
Denmark  
TEL: 45-43-969040  
FAX: 45-43-424347  
URL: [www.dlink.dk](http://www.dlink.dk)

## Norway

Karihaugveien 89  
N-1086 Oslo  
Norway  
TEL: +47 99 300 100  
FAX: +47 22 30 95 80  
URL: [www.dlink.no](http://www.dlink.no)

## Finland

Latokartanontie 7A  
FIN-00700 HELSINKI  
Finland  
TEL: +358-10 309 8840  
FAX: +358-10 309 8841  
URL: [www.dlink.fi](http://www.dlink.fi)

## Spain

Avenida Diagonal, 593-95, 9th floor  
08014 Barcelona  
Spain  
TEL: 34 93 4090770  
FAX: 34 93 4910795  
URL: [www.dlink.es](http://www.dlink.es)

## Portugal

Rua Fernando Pahlha  
50 Edificio Simol  
1900 Lisbon Portugal  
TEL: +351 21 8688493  
URL: [www.dlink.es](http://www.dlink.es)

## Czech Republic

Vaclavske namesti 36, Praha 1  
Czech Republic  
TEL: +420 (603) 276 589  
URL: [www.dlink.cz](http://www.dlink.cz)

## Switzerland

Glatt Tower, 2.OG CH-8301  
Glattzentrum Postfach 2.OG  
Switzerland  
TEL: +41 (0) 1 832 11 00  
FAX: +41 (0) 1 832 11 01  
URL: [www.dlink.ch](http://www.dlink.ch)

## Greece

101, Panagoulis Str. 163-43  
Helioupolis Athens, Greece  
TEL: +30 210 9914 512  
FAX: +30 210 9916902  
URL: [www.dlink.gr](http://www.dlink.gr)

## Luxemburg

Rue des Colonies 11,  
B-1000 Brussels,  
Belgium  
TEL: +32 (0)2 517 7111  
FAX: +32 (0)2 517 6500  
URL: [www.dlink.be](http://www.dlink.be)

## Poland

Budynek Aurum ul. Walic-w 11  
PL-00-851  
Warszawa  
Poland  
TEL: +48 (0) 22 583 92 75  
FAX: +48 (0) 22 583 92 76  
URL: [www.dlink.pl](http://www.dlink.pl)

## Hungary

R-k-czi-t 70-72  
HU-1074  
Budapest  
Hungary  
TEL: +36 (0) 1 461 30 00  
FAX: +36 (0) 1 461 30 09  
URL: [www.dlink.hu](http://www.dlink.hu)

## Singapore

1 International Business Park  
#03-12 The Synergy  
Singapore 609917  
TEL: 65-6774-6233  
FAX: 65-6774-6322  
URL: [www.dlink-intl.com](http://www.dlink-intl.com)

## Australia

1 Giffnock Avenue  
North Ryde, NSW 2113  
Australia  
TEL: 61-2-8899-1800  
FAX: 61-2-8899-1868  
URL: [www.dlink.com.au](http://www.dlink.com.au)

## India

D-Link House, Kurla Bandra Complex Road  
Off CST Road, Santacruz (East)  
Mumbai - 400098  
India  
TEL: 91-022-26526696/56902210  
FAX: 91-022-26528914  
URL: [www.dlink.co.in](http://www.dlink.co.in)

## Middle East (Dubai)

P.O.Box: 500376  
Office: 103, Building:3  
Dubai Internet City  
Dubai, United Arab Emirates  
Tel: +971-4-3916480  
Fax: +971-4-3908881  
URL: [www.dlink-me.com](http://www.dlink-me.com)

## Turkey

Ayazaga Maslak Yolu  
Erdebil Cevahir Is Merkezi  
5/A Ayazaga – Istanbul  
Turkiye  
TEL: +90 212 289 56 59  
FAX: +90 212 289 76 06  
URL: [www.dlink.com.tr](http://www.dlink.com.tr)

## Egypt

19 El-Shahed Helmy, El Masri  
Al-Maza, Heliopolis  
Cairo, Egypt  
TEL: +202 414 4295  
FAX: +202 415 6704  
URL: [www.dlink-me.com](http://www.dlink-me.com)

## Israel

11 Hamanofim Street  
Ackerstein Towers, Regus Business Center  
P.O.B 2148, Hertzelia-Pituach 46120  
Israel

TEL: +972-9-9715700  
FAX: +972-9-9715601  
URL: [www.dlink.co.il](http://www.dlink.co.il)

## LatinAmerica

Isidora Goyechea 2934  
Ofcina 702  
Las Condes  
Santiago – Chile  
TEL: 56-2-232-3185  
FAX: 56-2-232-0923  
URL: [www.dlink.cl](http://www.dlink.cl)

## Brazil

Av das Nacoes Unidas  
11857 – 14- andar - cj 141/142  
Brooklin Novo  
Sao Paulo - SP - Brazil  
CEP 04578-000 (Zip Code)  
TEL: (55 11) 21859300  
FAX: (55 11) 21859322  
URL: [www.dlinkbrasil.com.br](http://www.dlinkbrasil.com.br)

## South Africa

Einstein Park II  
Block B  
102-106 Witch-Hazel Avenue  
Highveld Technopark  
Centurion  
Gauteng  
Republic of South Africa  
TEL: 27-12-665-2165  
FAX: 27-12-665-2186  
URL: [www.d-link.co.za](http://www.d-link.co.za)

## Russia

Grafsky per., 14, floor 6  
Moscow  
129626 Russia  
TEL: 7-095-744-0099  
FAX: 7-095-744-0099 #350  
URL: [www.dlink.ru](http://www.dlink.ru)

## China

No.202,C1 Building, Huitong Office Park, No. 71,  
Jianguo  
Road, Chaoyang District, Beijing  
100025, China.  
TEL: +86-10-58635800  
FAX: +86-10-58635799  
URL: [www.dlink.com.cn](http://www.dlink.com.cn)

## Taiwan

2F, No. 119, Pao-Chung Rd.  
Hsin-Tien, Taipei  
Taiwan  
TEL: 886-2-2910-2626  
FAX: 886-2-2910-1515  
URL: [www.dlinktw.com.tw](http://www.dlinktw.com.tw)

## Headquarters

2F, No. 233-2, Pao-Chiao Rd.  
Hsin-Tien, Taipei  
Taiwan  
TEL: 886-2-2916-1600  
FAX: 886-2-2914-6299  
URL: [www.dlink.com](http://www.dlink.com)